

Borders 12 Car Instructions

- ♦ **CRO unless stated otherwise**

1. Start (MTC1) to TC1(093 716)

Go via
135 678, 111 695 (RC1), 123 712 (RC2), Quiet through Dalton

2. TC1(093 716) -> TC2(033 689) -All RC's are at junction following grid line

09, Quiet Stamfordham, 08,71,07,70 (RC3),06 (RC4),05 ,70 (RC5),04 (RC6),70,69

3. TC2(033 689) -> TC3(014 657)

Avoid 100 m around:- 030 686, 040 685, 043 684, 020 669, 030 673, 021 690, 004 690, 980 687, 984 700, 982 670, 985 660, 980 663, 992 660, 020 669, 020 662

RC7 @ 1st Junction after TC2,
RC8 @ 025 678,
RC9 @ , ONNVM Roman fort on LHS of B6318
RC10 @ 987 675,
RC11 @ Junction following Spot Height 141,
RC12 @ 013 663.

Quiet turning off A68 @ Stagshaw House

4. TC3(014 657) -> TC4(998 601) Enter road junctions on the hour, leave on minute:-

13:30,12:15, 21:25, 20:12, 21:15 (RC14), 21:25, 13:45, 14:25, 13:25, 23:35, 12:35, 14:55,
(16:50)-staggered junction, 18:45, 16:50 , (14:45) – staggered Junction across A68, 13:50

Quiet at Stocksfield

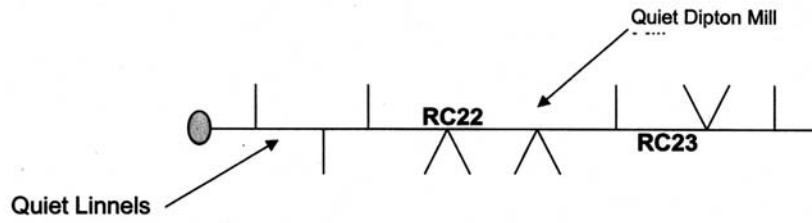
RC13 020 626,
RC15 053 602,
RC16 Spot Height 98,
RC17 008 588

5. TC4(998 601) -> TC5(963 615) – These are road colours. The first letter is the colour of the road you approach the junction on and the last letter is the colour of the road you leave on.

YYY (RC18),YYY,YYY,YYYY,YYY,YYY,YRR,RYR,RYR,ROR,RYRO(Staggered Junction),OYO(RC21)

RC19 993 611 – NAM1
RC20 001 613 – NAM2,

6. TC5(963 615) -> TC6(916 601)



7. TC6(918 601) -> TC7(912 581)

Go through 9160, 9159, 9059, 9058, 8958, 9058, 9057, 9058(just), 9158

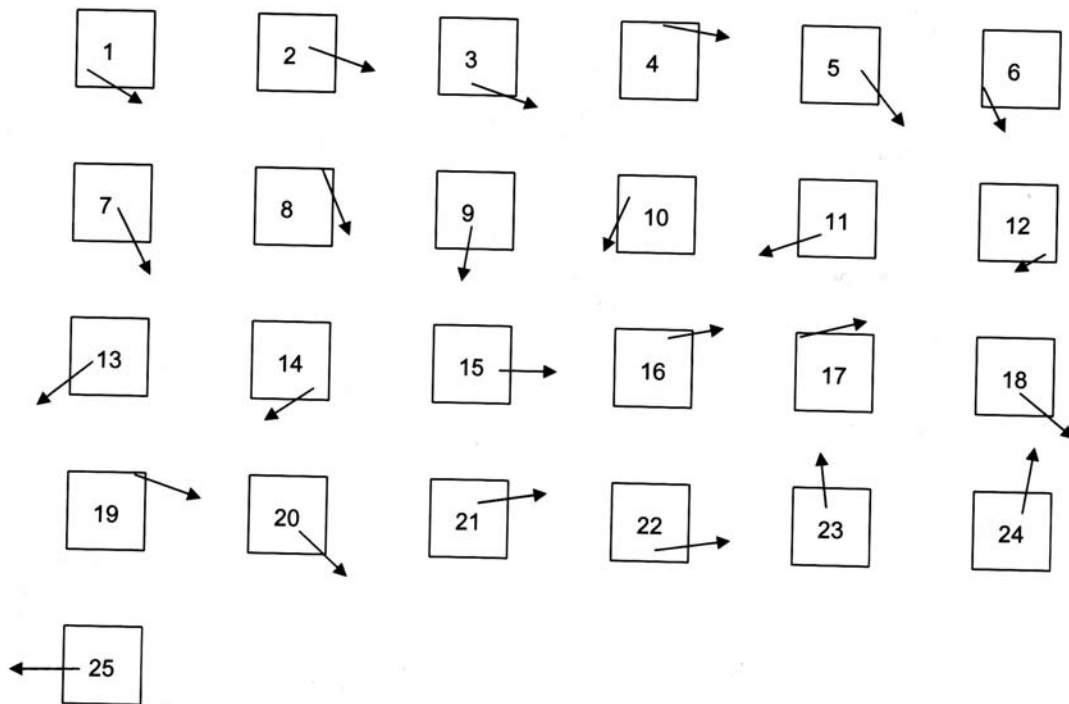
RC24 899 589,
RC25 900 587,
RC26 907 579

Caution over crest @ Cooks Ho.

8. TC7(912 581) -> TC8(004 560)

912581					NAM3 		QUIET!
TC7		V-QUIET !! CAUTION FORD!	RC27	QUIET THRU WHITLEY C.!	RC28		RC29
							004560
RC30				RC31	CAUTION TRAFFIC!		TC 8

9. TC8(004 560) -> TC9(068 506). Box 1 is Grid Square 0056



RC32 037 535 – approach heading towards NNE

RC33 013 494 – approach heading towards NE.

RC34 038 501 – NAM4

Box 17 & 19 are the same grid square#

Quiet through Edmundbyers, Muggleswick, Castleside & TC9

10. TC9(068 506) -> TC10(065 554)

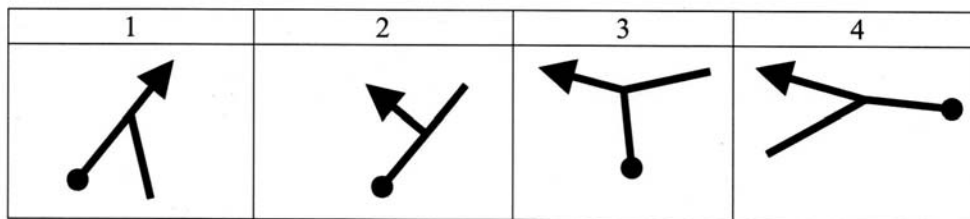
196, RC35 approach heading towards NE, 229, RC36 approach heading towards NW, 222

Quiet and slow at Shotley Field

11. TC10(065 554) -> TC11(123 626)

177, RC37 NAM5 (093 557), 191, RC38 (095 594), 224, 226

Then



Then – Consider whites

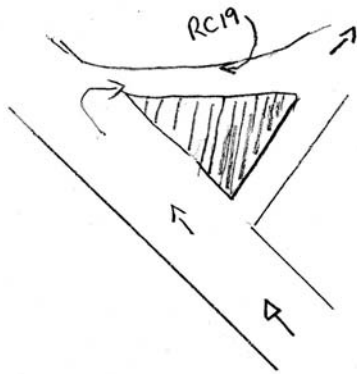
YWW, WWY, YWY

12. TC11(123 626) -> MTC2 (Finish) CRO

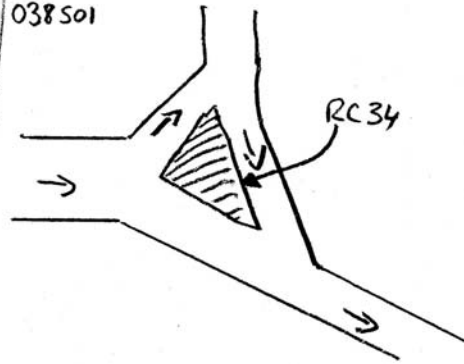
Quiet – Transport Section

TJTL onto A695, Side Road Straight On, Straight on at roundabout (A695), TR at Roundabout across bridge, TJTL to finish

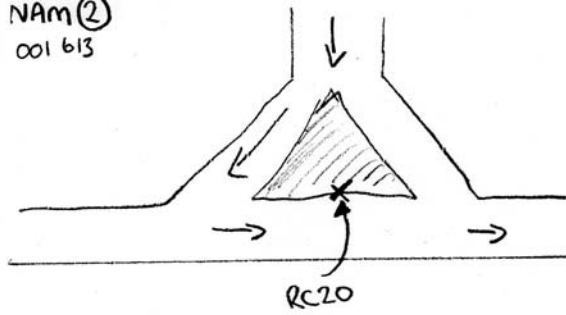
NAM ①
993611



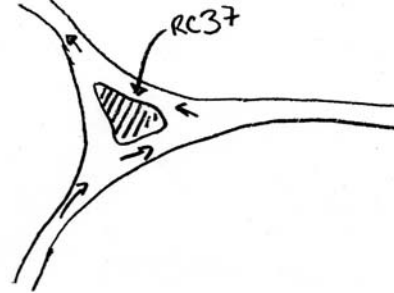
NAM 4
038501



NAM ②
001613



NAM 5
093557



NAM ③
940582

